

NOTES:

1. SETBACK REGULATIONS ARE AS FOLLOWS:
 FRONT = 15' at CLAREMONT AVENUE
 15' at WILTON PLACE
 SIDE = 10'
 REAR = 25' ADJOINING GOLF COURSE
 15' at ALL OTHER REAR LINES

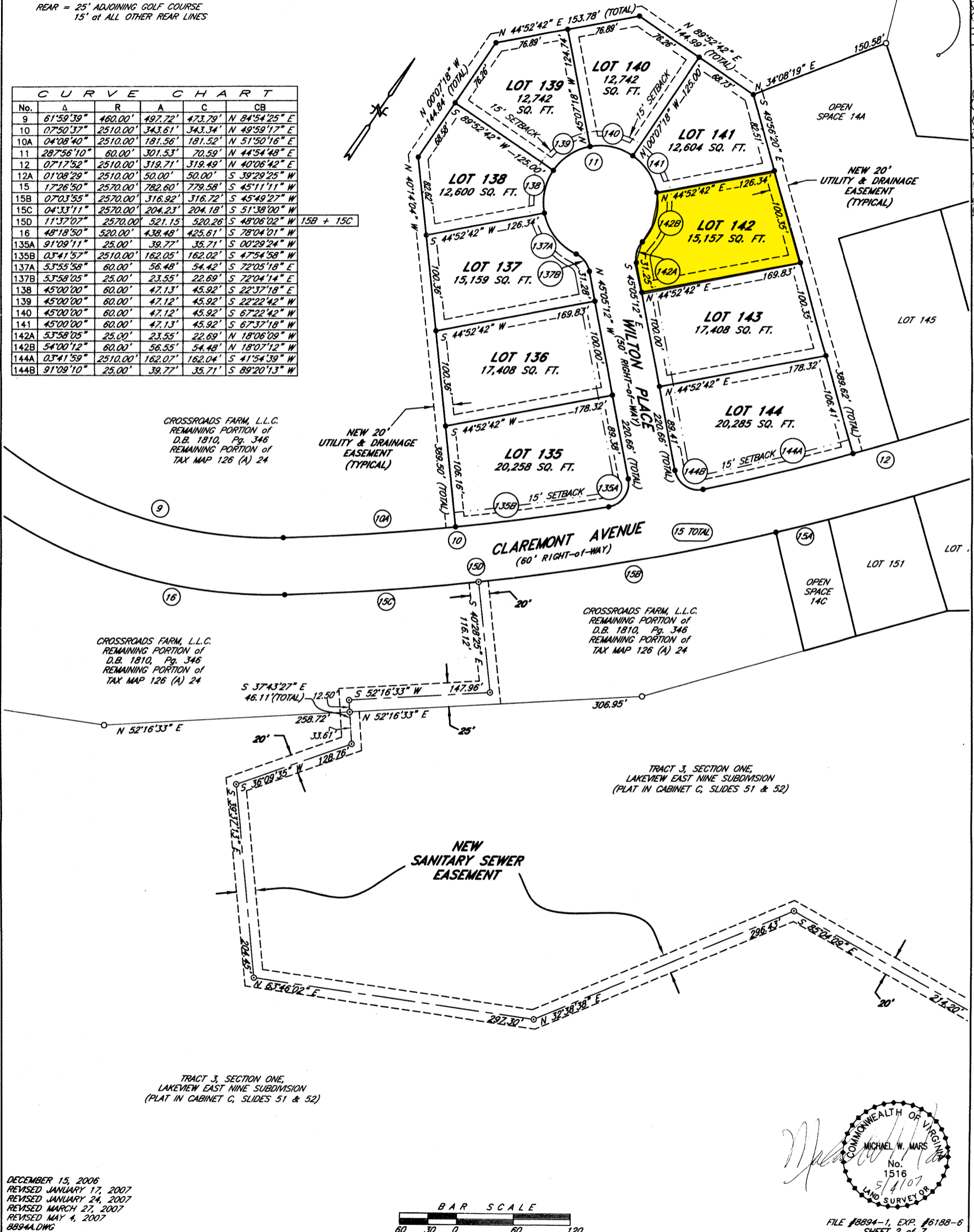
LEGEND:

- IRON PIN FOUND
- IRON PIN SET
- POINT

CROSSROADS FARM, L.L.C.
 REMAINING PORTION of
 D.B. 1810, Pg. 346
 REMAINING PORTION of
 TAX MAP 126 (A) 24

TRACT 2, SECTION ONE,
 LAKEVIEW EAST NINE
 SUBDIVISION
 (PLAT in CABINET C,
 SLIDES 51 & 52)

No.	Δ	R	A	C	CB
9	61°59'39"	460.00'	497.72'	473.79'	N 84°54'25" E
10	07°50'37"	2510.00'	343.61'	343.34'	N 49°59'17" E
10A	04°08'40"	2510.00'	181.56'	181.52'	N 51°50'16" E
11	287°56'10"	60.00'	301.53'	70.59'	N 44°54'48" E
12	07°17'52"	2510.00'	319.71'	319.49'	N 40°06'42" E
12A	01°08'29"	2510.00'	50.00'	50.00'	S 39°29'25" W
15	17°26'50"	2570.00'	782.60'	779.58'	S 45°11'11" W
15B	07°03'55"	2570.00'	316.92'	316.72'	S 45°49'27" W
15C	04°33'11"	2570.00'	204.23'	204.18'	S 51°38'00" W
15D	11°37'07"	2570.00'	521.15'	520.26'	S 48°06'02" W
16	48°18'50"	520.00'	438.48'	425.61'	S 78°04'01" W
135A	91°09'11"	25.00'	39.77'	35.71'	S 00°29'24" W
135B	03°41'57"	2510.00'	162.05'	162.02'	S 47°54'58" W
137A	53°55'58"	60.00'	56.48'	54.42'	S 72°05'18" E
137B	53°58'05"	25.00'	23.55'	22.69'	S 72°04'14" E
138	45°00'00"	60.00'	47.13'	45.92'	S 22°37'18" E
139	45°00'00"	60.00'	47.12'	45.92'	S 22°22'42" W
140	45°00'00"	60.00'	47.12'	45.92'	S 67°22'42" W
141	45°00'00"	60.00'	47.13'	45.92'	S 67°37'18" W
142A	53°58'05"	25.00'	23.55'	22.69'	N 18°06'09" W
142B	54°00'12"	60.00'	56.55'	54.48'	N 18°07'12" W
144A	03°41'59"	2510.00'	162.07'	162.04'	S 41°54'39" W
144B	91°09'10"	25.00'	39.77'	35.71'	S 89°20'13" W



CROSSROADS FARM, L.L.C.
 REMAINING PORTION of
 D.B. 1810, Pg. 346
 REMAINING PORTION of
 TAX MAP 126 (A) 24

NEW 20'
 UTILITY & DRAINAGE
 EASEMENT
 (TYPICAL)

CLAREMONT AVENUE
 (60' RIGHT-OF-WAY)

CROSSROADS FARM, L.L.C.
 REMAINING PORTION of
 D.B. 1810, Pg. 346
 REMAINING PORTION of
 TAX MAP 126 (A) 24

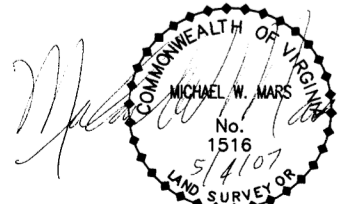
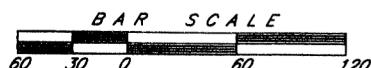
CROSSROADS FARM, L.L.C.
 REMAINING PORTION of
 D.B. 1810, Pg. 346
 REMAINING PORTION of
 TAX MAP 126 (A) 24

TRACT 3, SECTION ONE,
 LAKEVIEW EAST NINE SUBDIVISION
 (PLAT in CABINET C,
 SLIDES 51 & 52)

NEW
 SANITARY SEWER
 EASEMENT

TRACT 3, SECTION ONE,
 LAKEVIEW EAST NINE SUBDIVISION
 (PLAT in CABINET C,
 SLIDES 51 & 52)

DECEMBER 15, 2006
 REVISED JANUARY 17, 2007
 REVISED JANUARY 24, 2007
 REVISED MARCH 27, 2007
 REVISED MAY 4, 2007
 8894A.DWG



2007-200714 DB 3/24 Pg 33